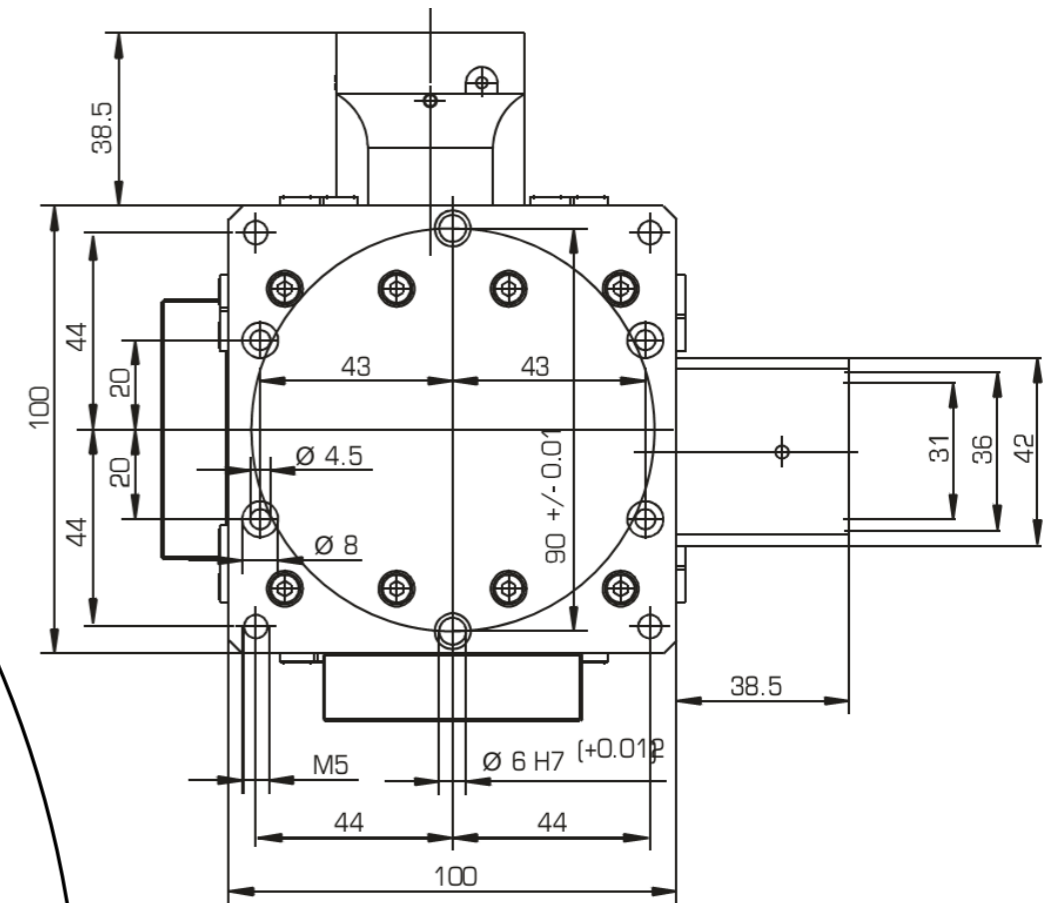


**280mm diameter plate, minimum
10mm thick (nominal thickness
10-13mm)**



Translation stage at top of CT stack

Legend

● **M5 countersunk fixing at 88mm centres, to translation stage below - see screw hole pattern above**

○ **M4 hole, approx 7mm deep, centre, and square pattern with 30, 50, 90, 130 and 170mm sides as shown (centre to centre)**

--- **Guidelines for hole pattern only**

— **Lines incised into surface of plate, approx 0.5mm wide x 0.5mm deep (for rough alignment of samples); circles have diameters of 25, 50, 75, 100, 150, 200mm**